

Pivot Wall Mount

For 10" to 24" Flat Panel Screens



FLAT PANEL MOUNTS

1. Arm extends up to 7.01" (178mm) from wall
2. Two tensioned pivot points for up to 180° of side-to-side swivel
3. Pre-tensioned tilt mechanism offers up to ±35° of one-touch tilt
4. ±5° roll aide in post installation screen leveling
5. Integrated cable management keeps cables and cords out of the way



MODELS

Universal Models:

Includes standard hardware (hex or Phillips) for attaching screen to mount

PP730 Gloss black
PP730-S Gloss silver

SCREEN ADAPTER



VESA® pattern

Universal Models: 75 and 100mm

SPECIFICATIONS



Distance from wall

2.36"-7.01" (60-178mm)



Tilt | Swivel | Roll

±35° | ±90° | ±5°



Max load

25lb (11kg)

Product Dimensions (W x H x D)

8.11" x 5.5" x 2.36"-7.01"
(206 x 140 x 60-178mm)

Mounting Surfaces

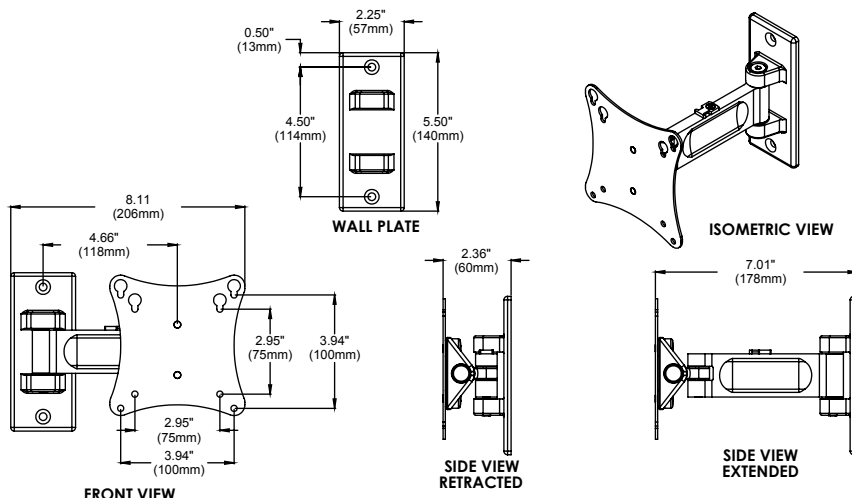
Wood stud, concrete, cinder block and metal stud
(Metal stud accessory required)

Ship Weight

2.2lb (1kg)

For expanded product information and technical data visit www.peerlessmounts.com

TECHNICAL DRAWINGS



CERTIFICATIONS



ACCESSORIES



ACC919: Security Fasteners pg# 156



WSP700: Metal Stud Wall Plate for 16" Center Metal Studs ... pg# 154



WSP701: Metal Stud Wall Plate for 20" and 24" Center Metal Studs .. pg# 154

To verify mount compatibility with any LCD, plasma or projector model use MountFinder™ at www.peerlessmounts.com



CLICK: www.peerlessmounts.com



CALL: 800.865.2112



FAX: 800.359.6500