

SmartMount® Articulating Wall Arm

For 37" to 71" (94-180 cm) LCD and Plasma Screens



FLAT PANEL MOUNTS

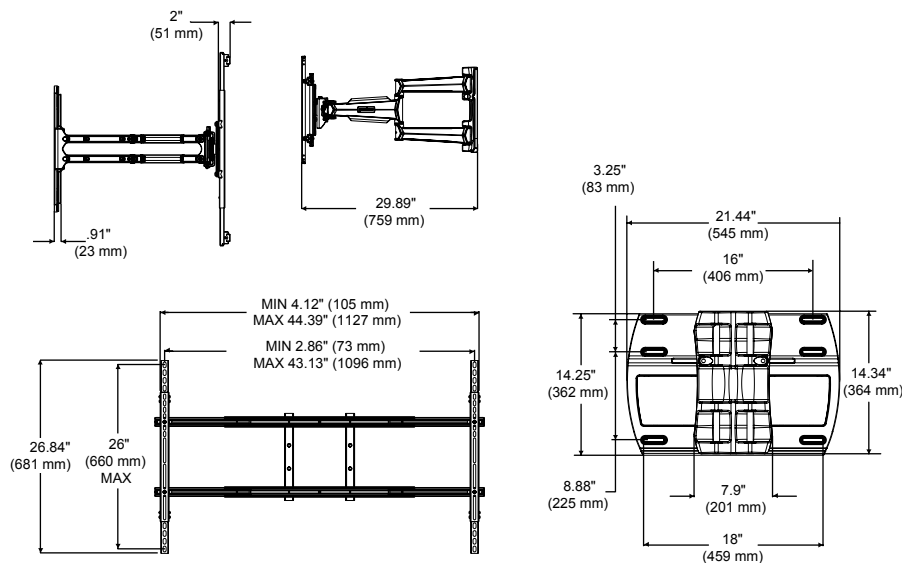
1. Arm extends up to 29.8" (759 mm) from wall
2. Accommodates 37" to 71" (94-180 cm) screens with mounting holes up to 43.13" W x 26" H (1096-660 mm)
3. 1" (25 mm) clearance per channel for clean and simple cable management
4. Dual-arm construction for extra strength and smooth motion
5. Up to 7.75" (196 mm) total horizontal adjustment
7. One-touch tilt allows adjustment of +15/-5° without the use of tools
8. Built-in cable ties control cables and cords with movement of arm
9. Two knockouts in wall plate for optimal electrical access
10. ±2.5° roll to level screen horizontally
11. Allows portrait or landscape screen orientation without removing the screen

Universal Models



For expanded product information and technical data visit www.peerlessmounts.com

TECHNICAL DRAWINGS



MODELS

Universal Models:

Includes standard hardware (hex or Phillips) for attaching screen to mount

SA770PU	High gloss black
SA770PU-S	High gloss silver

SCREEN ADAPTER



Mounting pattern

Universal Models:	43.13" W x 26" H (1096 x 660 mm)
-------------------	-------------------------------------

SPECIFICATIONS



Distance from wall

6.8"-29.8" (172-759 mm)



Tilt | Swivel | Roll

+15/-5° | ±45° | ±2.5°



Max load

200 lb (90 kg)

Product Dimensions (W x H x D)

32.87"-45.87" x 26.8" x 6.8"-29.8"
(835-1095 x 680 x 172-756 mm)

Mounting Surfaces

Wood stud, concrete, cinder block and metal stud
(Metal stud accessory required)

Ship Weight

52.5 lb (23.8 kg)

CERTIFICATIONS



RoHS

ACCESSORIES



ACC615:

6-pack Metal Stud pg# 126
Fastener Kit
supports up to 125 lb (56.7 kg) screens



ACC925:

Security Fasteners pg# 128

To verify mount compatibility with any LCD, plasma or projector model use MountFinder™ at www.peerlessmounts.com



CLICK: www.peerlessmounts.com



CALL: 800.865.2112



FAX: 708.865.2941