

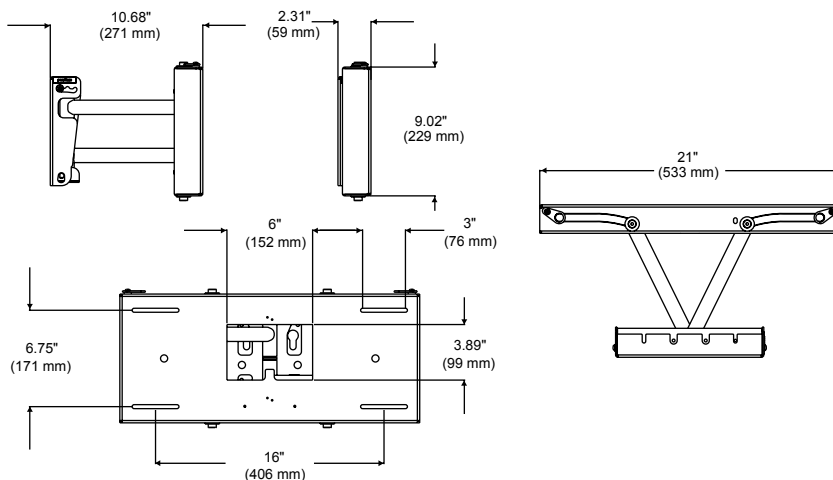


1. Arms extend up to 10.68" (271 mm) from wall (plus thickness of adapter plate)
2. Pull-out swivel with up to 90° rotation
3. 0°, 5° or 10° lockable tilt
4. Built-in cable management
5. ±1° roll for horizontal screen alignment during installation
6. Locking tab included for optional swivel restriction to one side
7. Dedicated models include VESA® 100 and 200 x 100 mm compliant adapter plate
8. Lock Key™ installation tool secures arms for screen installation



For expanded product information and technical data visit www.peerlessmounts.com

TECHNICAL DRAWINGS



MODELS

| | |
|---|--------------------|
| Universal Models: | 32" to 58" screens |
| Includes theft resistant hardware for attaching screen to mount | |
| SP850-UNL | Black |
| SP850-UNL-S | Silver |
| Includes standard hardware (hex or Phillips) for attaching screen to mount | |
| SP850-UNLP | Black |
| SP850-UNLP-S | Silver |
| SP850-UNLP-GB | High gloss black |
| SP850-UNLP-GS | High gloss silver |
| Dedicated Models: | 26" to 58" screens |
| Screen adapter purchased separately for non-VESA® screens* Includes theft resistant hardware for attaching screen to mount | |
| SP850 | Black |
| SP850-S | Silver |
| Includes standard hardware (hex or Phillips) for attaching screen to mount | |
| SP850P | Black |
| SP850P-S | Silver |

* Dedicated adapter plates come in flat black and include security fasteners

SCREEN ADAPTER

| | |
|--------------------------|--|
| | Mounting pattern |
| Universal Models: | 28.7" W x 17.05" H (729 x 433 mm) |
| | VESA® pattern |
| Dedicated Models: | 100 and 200 x 100 mm Non-VESA® compliant screens require screen-specific adapter to be purchased separately |

SPECIFICATIONS

| | |
|---------------------------------------|---|
| | Distance from wall |
| Universal Models: | 3.4"-11.9" (86-302 mm) |
| Dedicated Models: | 2.31"-10.68" (59-271 mm) |
| | Tilt Swivel Roll |
| | 0°, 5° or 10° ±45° ±1° |
| | Max load |
| | 150 lb (68 kg) |
| Product Dimensions (W x H x D) | |
| Universal Models: | 30.75" x 18" x 3.4"-11.9" (781 x 457 x 86-302 mm) |
| Dedicated Models: | 21" x 9.76" x 2.31"-10.68" (533 x 248 x 59-271 mm) |
| Mounting Surfaces | Wood stud, concrete and cinder block |
| Ship Weight | |
| Universal Models: | 39 lb (17.6 kg) |
| Dedicated Models: | 22.7 lb (10.24 kg) |

CERTIFICATIONS



To verify mount compatibility with any LCD, plasma or projector model use MountFinder™ at www.peerlessmounts.com