

Indoor/Outdoor Flat Panel Enclosures

For 42" to 52" Flat Panel Screens

MODELS

Universal Models:

Requires wall, ceiling or post mounting accessory, to be purchased separately.

Fan models:

EL42F-S Silver
EL47F-S Silver
EL52F-S Silver

AC with heater models:

EL42AH-S Silver
EL47AH-S Silver
EL52AH-S Silver

Black models available and will require a 3-4 week lead time and possible additional charges.

SCREEN ADAPTER



Mounting pattern

Universal Models: 28.7" W x 17" H
 (729 x 431 mm)

Note: Refer to chart below to ensure screen compatibility

SPECIFICATIONS



Max load

120 lb (54 kg)

Product Dimensions (W x H x D)

EL42 models: 47.95" x 31.95" x 10.45"
 (1218 x 811 x 265 mm)
EL47 models: 51.42" x 33.36" x 10.12"
 (1306 x 847 x 257 mm)
EL52 models: 57.19" x 36.69" x 10.6"
 (1452 x 932 x 269 mm)

Max Display Power Load

EL42 models: 250 Watts
EL47 models: 380 Watts
EL52 models: 500 Watts

Mounting Surfaces

Wood stud, concrete or cinderblock, wall, ceiling or floor

Ship Weight

EL42F-S: 95 lb (43.2 kg)
EL47F-S: 105 lb (47.7 kg)
EL52F-S: 115 lb (52.3 kg)
EL42AH-S: 125 lb (56.8 kg)
EL47AH-S: 135 lb (61.3 kg)
EL52AH-S: 145 lb (65.9 kg)

ACCESSORIES



EWIS:
 Indoor Wall Mount pg# 133



EWO-SS:
 Outdoor Wall Mount..... pg# 133



ECI300S:
 Indoor Ceiling Mount pg# 133



EC0300-SS:
 Outdoor Ceiling Mount..... pg# 133

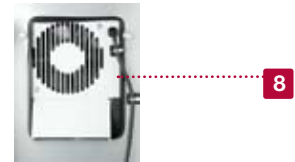
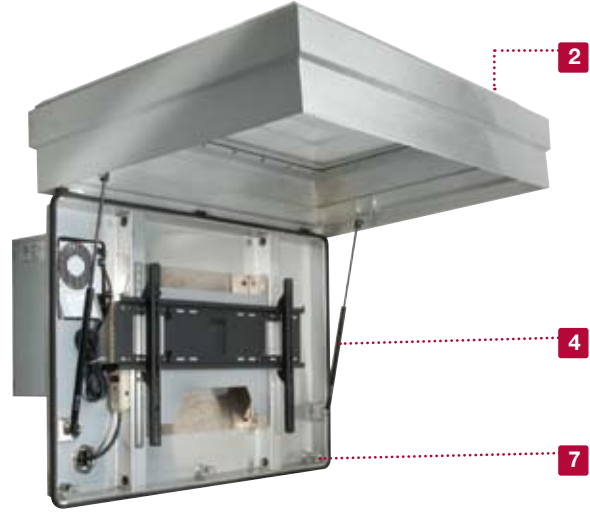


EPI800S:
 Indoor Post Mount pg# 133



EPO800-SS:
 Outdoor Post Mount..... pg# 133

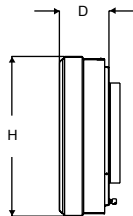
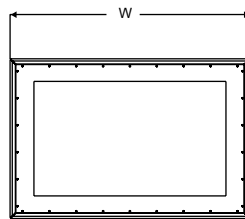
1. For indoor and outdoor installations
2. Aluminum body - NEMA certified
3. Anti-reflective glass window
4. Gas struts for easy enclosure opening
5. 6-outlet 115V 15amp power strip
6. Slip hinges for front cover removal
7. Tubular keyed compression locks
8. Available in fan only or AC/heated models



Note: Customizable enclosures available for screens from 32" to 65". Call for specifications.

TECHNICAL DRAWINGS

For expanded product information and technical data visit www.peerlessmounts.com



Overall Dimensions	EL42 Models	EL47 Models	EL52 Models
H	31.95" (811 mm)	33.36" (847 mm)	36.69" (932 mm)
W	47.95" (1218 mm)	51.42" (1306 mm)	57.19" (1452 mm)
D	10.45" (265 mm)	10.12" (257 mm)	10.6" (269 mm)

Maximum display size enclosures can accommodate			
Dimensions	EL42 Models	EL47 Models	EL52 Models
H	25.5" (647 mm)	26.87" (682 mm)	30.15" (765 mm)
W	41.5" (1054 mm)	44.83" (1138 mm)	50.6" (1285 mm)
D	5.5" (139 mm)	5.5" (139 mm)	6" (152 mm)

Note: Dimension do not include AC/heat unit

