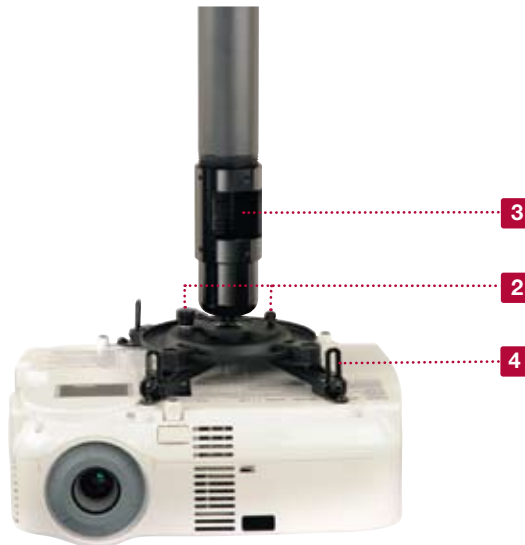


# PJF2 Projector Mount

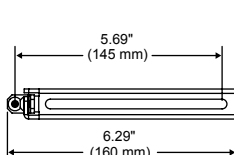
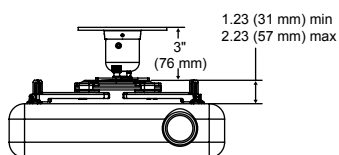
For Projectors up to 50 lb (22 kg)

1. Single point of adjustment for quick image alignment
2. Two thumb screws allow fast projector removal for lamp and filter maintenance
3. Cords routed internally through extension column
4. Spider® Universal Adapter Plate extends up to 17.63" (448 mm) to fit most projector models
5. Dedicated adapter plates available for specific projector models
6. Available clamp-style adapter plates have adjustable height and width to fit most projectors

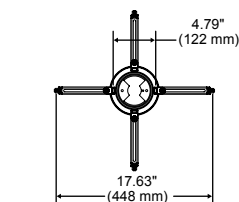


For expanded product information and technical data visit [www.peerlessmounts.com](http://www.peerlessmounts.com)

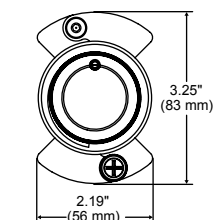
## TECHNICAL DRAWINGS



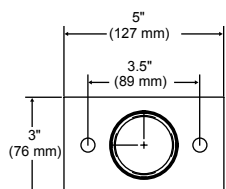
CHANNEL DETAIL VIEW



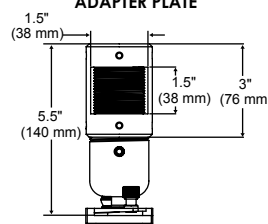
TOP VIEW OF ADAPTER PLATE



TOP VIEW OF BALL AND SOCKET MOUNT



CEILING PLATE DETAIL



CORD MANAGEMENT CONNECTOR DETAIL

## MODELS

### Universal Models:

Includes theft resistant hardware for attaching screen to mount

<b>PJF2-UNV</b>	Black
<b>PJF2-UNV-S</b>	Silver

### Kitted Dedicated Models:

Includes dedicated projector adapter plate

<b>PJF2-MODELS</b>	Black
--------------------	-------

### Dedicated Models:

Screen adapter purchased separately\*

<b>PJF2-1</b>	Black
---------------	-------

\* Dedicated adapter plates come in flat black and include security fasteners

## PROJECTOR ADAPTER



### Mounting pattern

<b>Universal Models:</b>	Up to 17.63" (448 mm)
<b>Kitted Dedicated Models:</b>	Includes dedicated projector adapter plate. Use MountFinder™ to verify model.
<b>Dedicated Models:</b>	Requires projector specific adapter plate to be purchased separately.

## SPECIFICATIONS



### Tilt | Swivel | Roll

±15° | 360° | ±15°



### Max load

50 lb (22 kg)

### Product Dimensions (W x H x D)

<b>Universal Models:</b>	8.5"-17.63" x 4.23"-7.73" x 8.5"-17.63" (216-448 x 107-196 x 216-448 mm)
<b>Dedicated Models:</b>	3.25" x 3.13" x 3.25" (83 x 79 x 83 mm)

### Mounting Surfaces

Wood joist, concrete and other structures (Other structures require accessory)

### Ship Weight

<b>Universal Models:</b>	3.58 lb (1.6 kg)
<b>Dedicated Models:</b>	1.3 lb (.58 kg)

## CERTIFICATIONS



## ACCESSORIES



**ACC, CMJ Models:**  
Ceiling Plates .....pg# 121, 123



**ADJ, EXT Models:**  
Extension Columns .....pg# 123



**PWA-14(S)(W):**  
Projector Wall Arm .....pg# 125

To verify mount compatibility with any LCD, plasma or projector model use MountFinder™ at [www.peerlessmounts.com](http://www.peerlessmounts.com)



CLICK: [www.peerlessmounts.com](http://www.peerlessmounts.com)



CALL: 800.865.2112



FAX: 708.865.2941