

# Installation and Assembly - Concrete fasteners

Model: ACC203

**Note:** Read entire instruction sheet before you start installation and assembly.  
Before you start make sure all parts listed are included with your product.

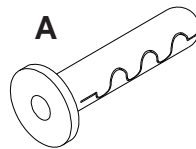


This product is intended for use with UL Listed products and must be installed by a qualified professional installer.

## Parts List

<i>PART #</i>	<i>QTY.</i>	<i>DESCRIPTION</i>
A 590-0097	3	concrete anchors (ACC203 ONLY)

Fastener Kit	Max. Load Concrete		Max. Load Cinder Block	
	Per Anchor	Per Kit	Per Anchor	Per Kit
ACC203	450 lb (204.1 kg)	1350 lb (612.3 kg)	250 lb (113.4 kg)	750 lb (340.2 kg)



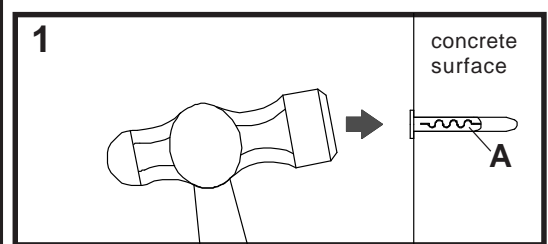
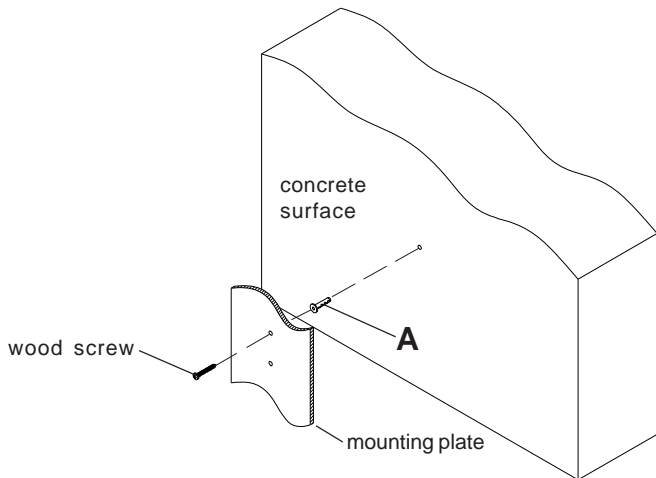
## ⚠ WARNING

- When installing Peerless mounts on cinder block, verify that you have a minimum of 1-3/8" of actual concrete surface in the hole to be used for the concrete anchors. Do not drill into mortar joints! Be sure to mount in a solid part of the block, generally 1" minimum from the side of the block. Cinder block must meet ASTM C-90 specifications. It is suggested that a standard electric drill on slow setting is used to drill the hole instead of a hammer drill to avoid breaking out the back of the hole when entering a void or cavity.
- Concrete must be 2000 psi density minimum. Lighter density concrete may not hold concrete anchor.
- Make sure that the supporting surface will safely support four times the combined load of the equipment and all attached hardware and components.

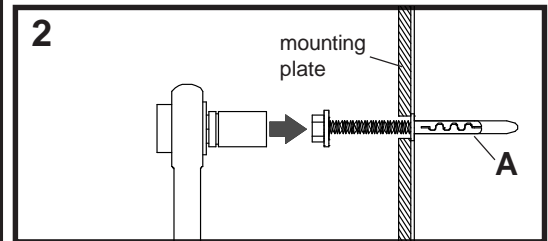
**1** For Concrete Surfaces use mounting plate, making sure that it is level, as a template to mark holes. Drill 1/4" (6 mm) dia. holes to a minimum depth of 2.5" (64 mm). Concrete must be 2000 psi density minimum. Insert anchors (A) in holes flush with supporting surface as shown (right). Place mounting plate over anchors (A) and secure with #14 x 2.5" (6 mm x 65 mm) wood screws. Tighten all fasteners.

## ⚠ WARNING

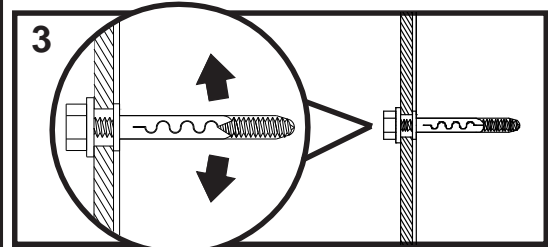
- Tighten concrete anchor bolts firmly, but do not overtighten. Overtightening can damage the bolts, greatly reducing their holding power.
- Never tighten in excess of 80 in. • lb (9 N.M.).



Drill hole(s) and insert anchor(s).



Place plate over anchor(s) and secure with screw(s).



Tighten all fasteners.

## ⚠ WARNING

- Concrete anchors are **not** intended for attachment to concrete wall covered with a layer of plaster, drywall, or other finishing material. If mounting to concrete wall covered with plaster/drywall is unavoidable, plaster/drywall (up to 5/8" thick) must be counterbored as shown. If plaster/drywall is thicker than 5/8", custom fasteners must be supplied by installer.

