

Read instruction sheet before you start installation and assembly.

Maximum Load Capacity:  
50 lb (22.7 kg)

**TABLE OF CONTENTS**

**Installing CPU mount bracket**

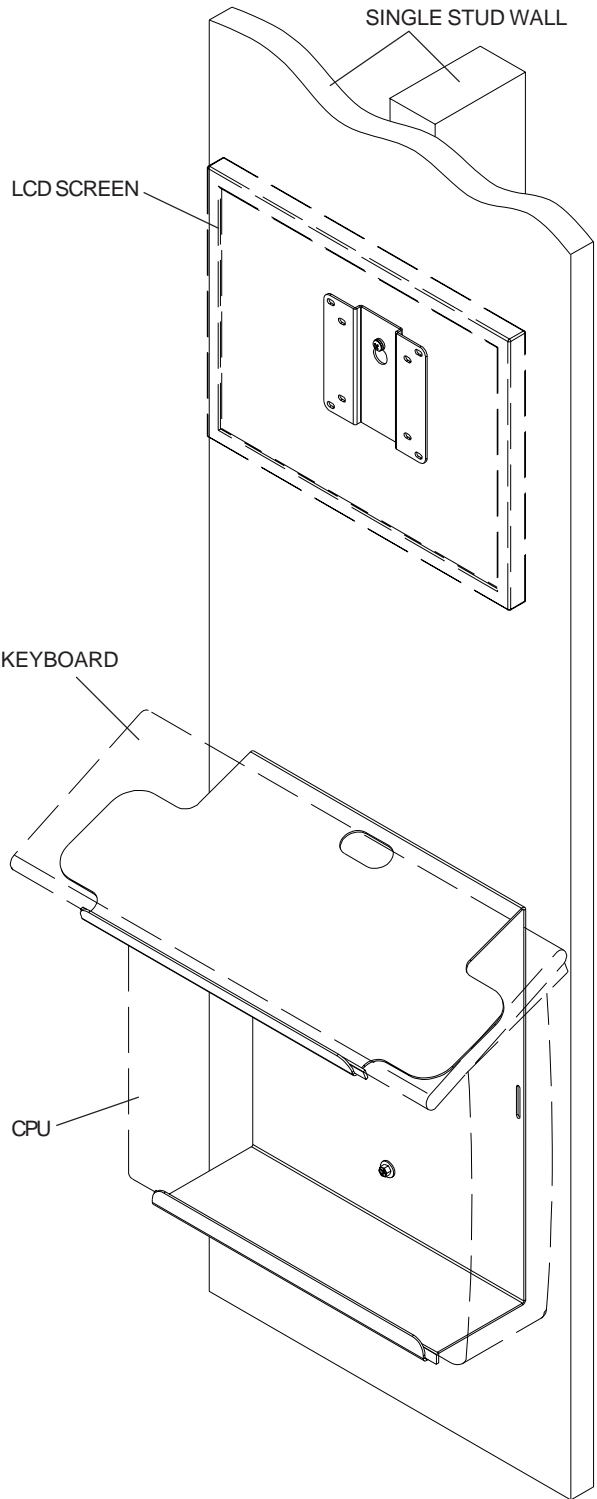
To wood stud walls ..... page 2

To solid concrete, concrete block,  
or brick walls ..... page 3

**Installing wall bracket for LCD screen**

To wood stud walls ..... page 5

To solid concrete, concrete block,  
or brick walls ..... page 6



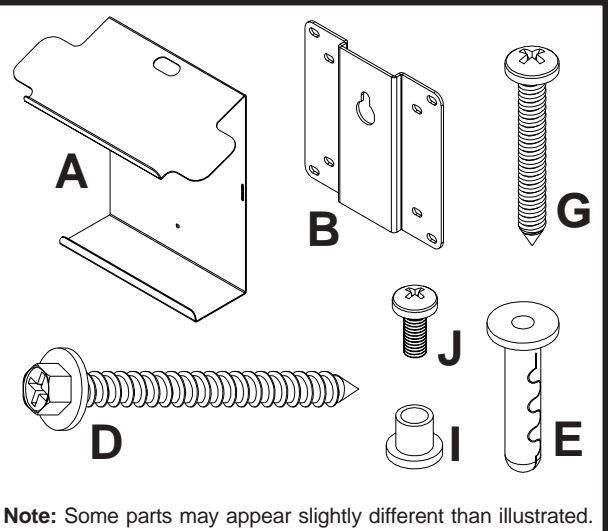
**⚠ WARNING**

- Installer must verify that the wall will safely support the combined weight of the MIS 120 and all attached components.
- When installing Peerless wall mounts on concrete block, verify that you have a minimum of 1 3/8" of actual concrete surface in the hole to be used for the concrete anchors. Do not drill into mortar joints! Be sure to mount in a solid part of the block, generally 1" minimum from the side of the block. Concrete block must meet ASTM C-90 specifications.
- Concrete must be 2000 psi density minimum. Lighter density concrete may not hold concrete anchor .
- Concrete anchors are not intended for attachment to concrete walls covered with a layer of plaster, drywall, or other finishing material.

Before you start, check the parts list to insure all of the parts shown are included.

## PARTS LIST

Description	Qty.	Part #
A CPU wall mount bracket	1	124-1689
B wall bracket	1	095-1141
C belt set (not pictured)	1	560-1095
D #14 x 2.5" hex head phillips wood screw	2	5S1-015-C03
E Alligator <sup>®</sup> concrete anchor	3	590-0097
F 3/4" x 1" rubber pad (not pictured)	8	590-1159
G #10 x 1 1/2" round head phillips wood screw	1	510-9163
H 3/8" x 12.75" foam pad (not pictured)	2	599-3802
I isolation spacer	1	590-0112
J M4 x .7 x 10 mm pan head phillips screw	4	504-9012



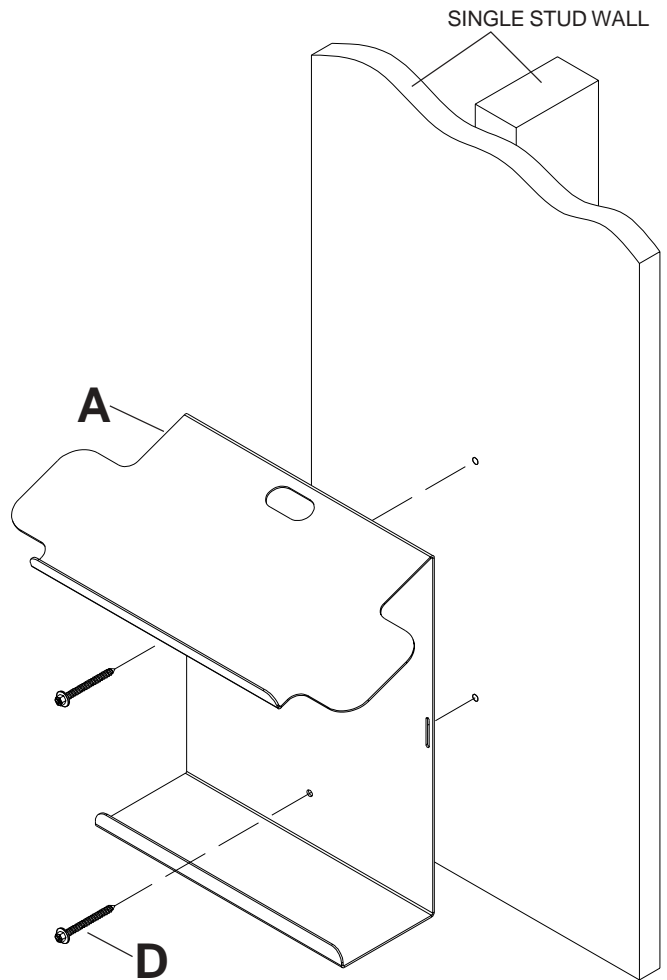
## Installing CPU mount bracket to wood stud walls

- 1** **Note:** Belt for securing CPU can be attached either before or after mounting wall bracket. See accompanying instructions for belt attachment to CPU wall mount bracket (A).

Place CPU wall mount bracket (A) to desired height, making sure bracket is level, and mark the two holes in center of CPU wall mount bracket (A). Drill two 5/32" (4 mm) dia. pilot holes to a minimum depth of 2.5" (64 mm) into center of stud. Attach CPU wall mount bracket (A) using two #14 x 2.5" wood screws (D) as shown. Tighten screws (D) *only* after belt (C) is attached.

### ⚠ WARNING

- Tighten wood screws so that wall plate is firmly attached, but do not overtighten. Overtightening can damage the screws, greatly reducing their holding power.
- Never tighten in excess of 80 in • lb (9 N.M.).
- Make sure that mounting screws are anchored into the center of the studs. The use of an "edge to edge" stud finder is highly recommended.

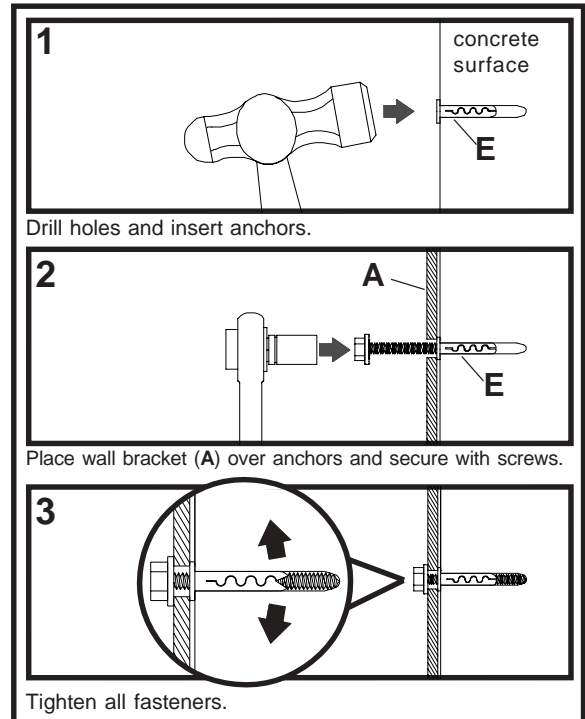


# Installing CPU mount bracket to solid concrete, cinder block, or brick walls

## ⚠ WARNING

- When installing Peerless wall mounts on cinder block, verify that you have a minimum of 1-3/8" of actual concrete surface in the hole to be used for the concrete anchors. Do not drill into mortar joints! Be sure to mount in a solid part of the block, generally 1" minimum from the side of the block. Cinder block must meet ASTM C-90 specifications. It is suggested that a standard electric drill on slow setting is used to drill the hole instead of a hammer drill to avoid breaking out the back of the hole when entering a void or cavity.
- Concrete must be 2000 psi density minimum. Lighter density concrete may not hold concrete anchor.
- Make sure that the wall will safely support four times the combined load of the equipment and all attached hardware and components.

- 1** **Note:** Belt for securing CPU can be attached either before or after mounting wall bracket. See accompanying instructions for belt attachment to CPU wall mount bracket (A).  
Place CPU wall mount bracket (A) to desired height and mark the two holes in center of CPU wall mount bracket (A). Drill two 1/4" (6 mm) dia. holes to a minimum depth of 2.5" (64 mm). Insert anchors (E) in holes flush with wall as shown (right). Place CPU wall mount bracket (A) over anchors (E) and secure with #14 x 2.5" (6 mm x 65 mm) wood screws (D) as shown. Tighten screws (D) *only* after belt (C) is attached.

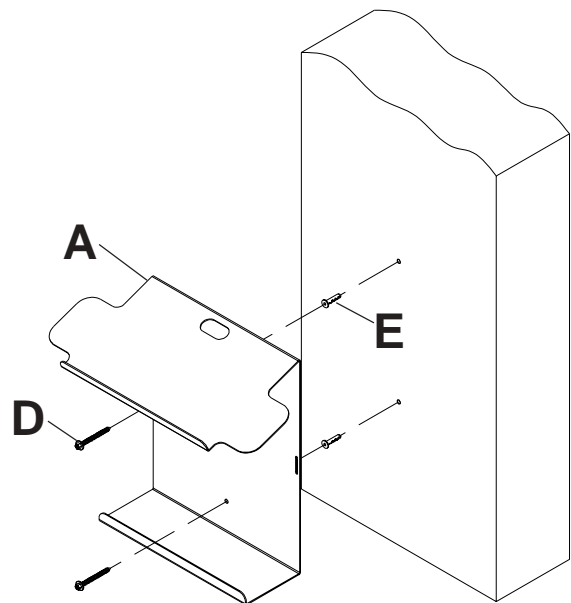
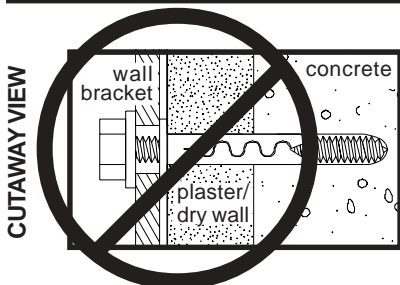


## ⚠ WARNING

- Tighten wood screws firmly, but do not overtighten. Overtightening can damage the bolts, greatly reducing their holding power.
- Never tighten in excess of 80 in • lb (9 N.M.).

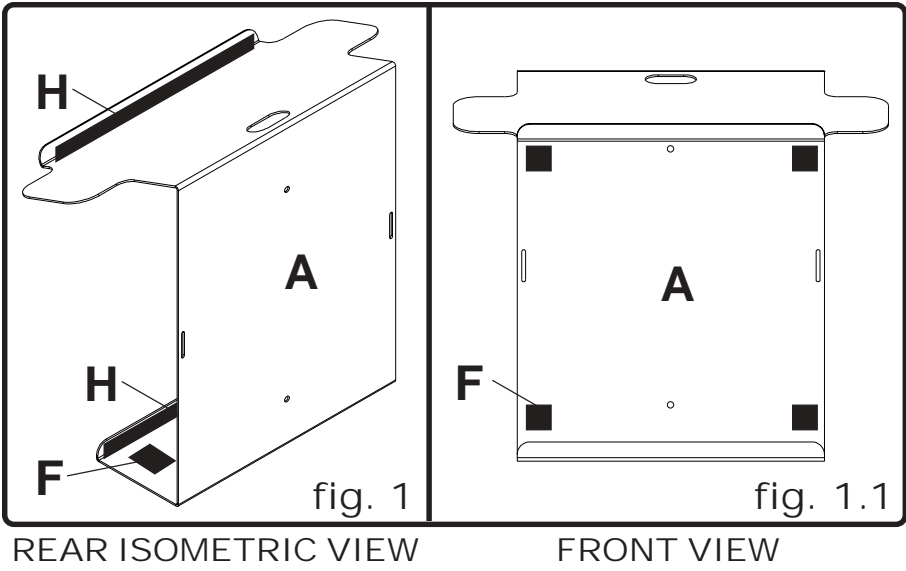
## ⚠ WARNING

- Concrete anchors are **not** intended for attachment to concrete wall covered with a layer of plaster, drywall, or other finishing material. If mounting to concrete wall covered with plaster/drywall is unavoidable, plaster/drywall (up to 5/8" thick) must be counterbored. If plaster/drywall is thicker than 5/8", custom fasteners must be supplied by installer.



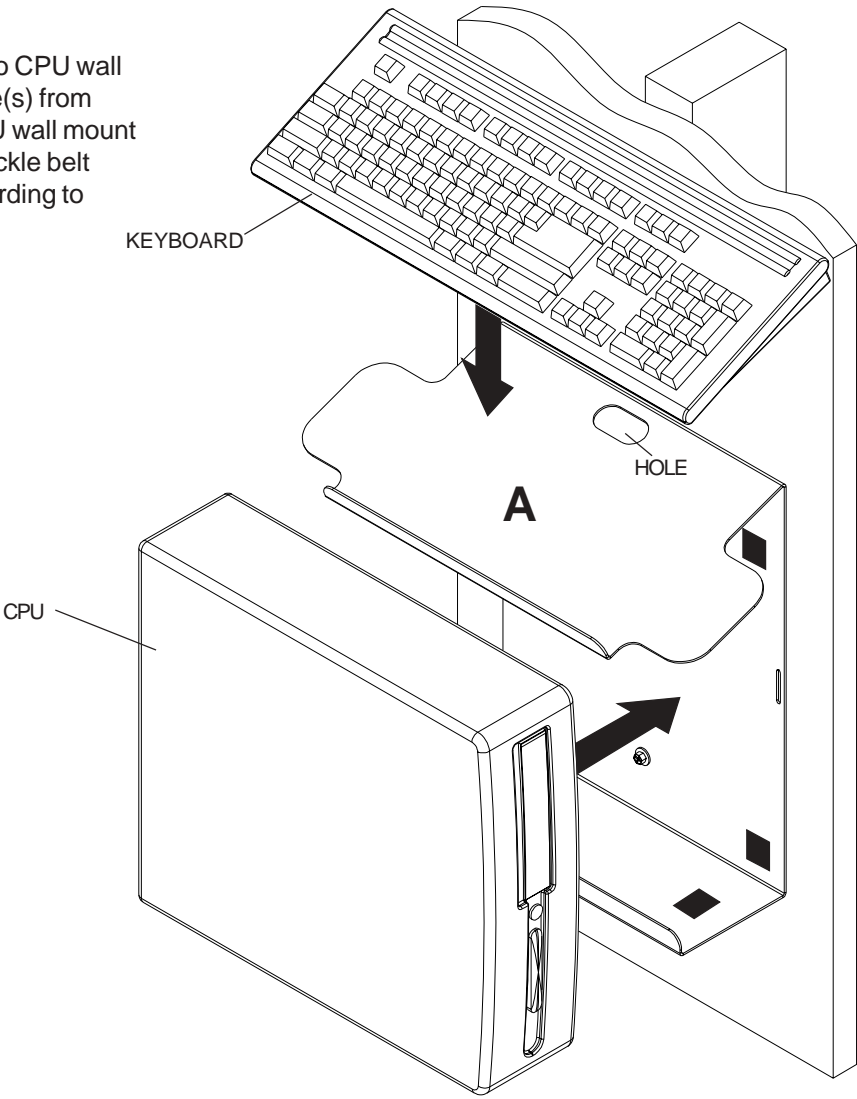
2

Cut foam pads (H) to size. Peel and place two foam pads (H) on lips of CPU wall mount bracket. Peel and place two rubber pads (F) on bottom of (A) where shown in figure 1. Peel and place four rubber pads (F) on the front of the CPU wall mount bracket (A) to protect the CPU where shown in figure 1.1.



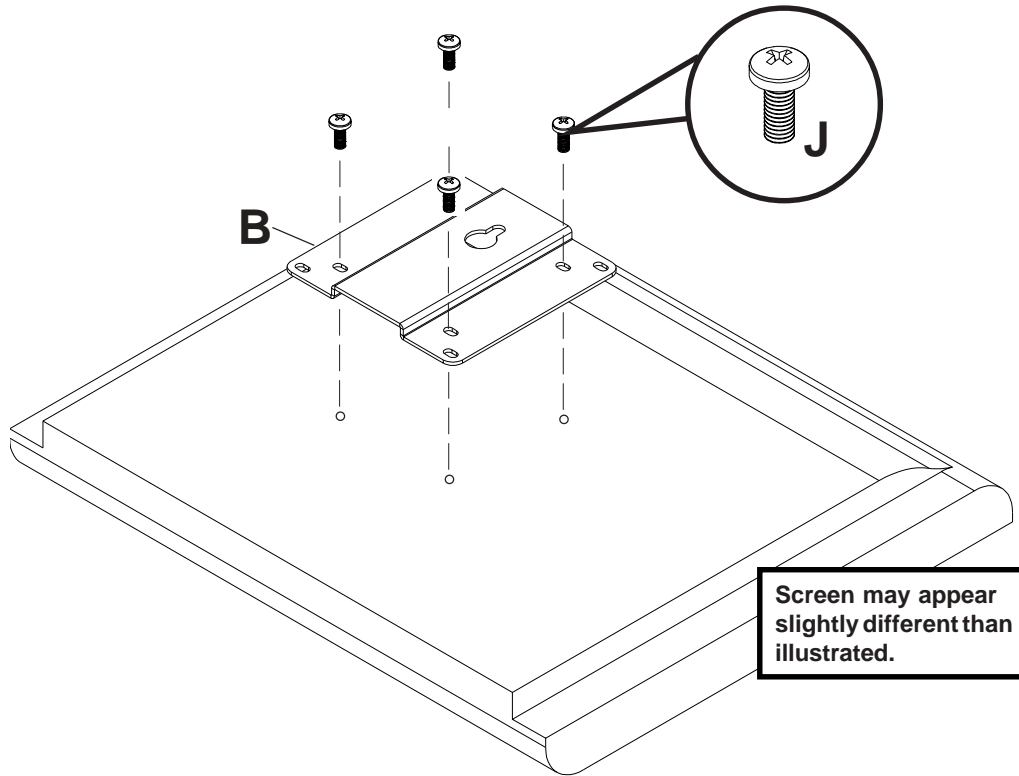
3

Place keyboard and CPU onto CPU wall mount bracket (A). Route wire(s) from keyboard through hole of CPU wall mount bracket (A) where shown. Buckle belt around CPU and tighten according to safety belt instruction sheet.



4

Attach wall bracket (B) to back of screen using four M4 x 10 mm screws (J) as indicated below.

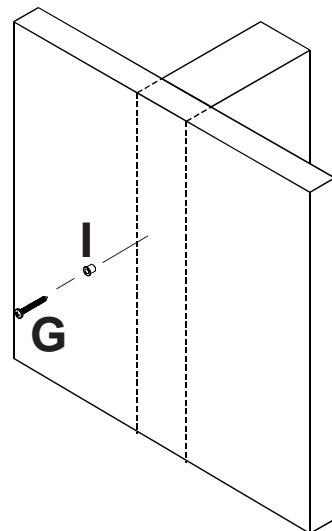


Screen may appear slightly different than illustrated.

### Installing wall bracket for LCD screen to wood stud walls

5

Mark the desired height for placement of LCD screen. Drill one 1/8" (3 mm) dia. pilot hole to a maximum depth of 1" (25 mm) into center of stud. Place screw isolation spacer (I) over wood screw (G). Screw #10 x 1-1/2" wood screw (G) with isolation spacer (I) into wall. Tighten the screw just until the isolation spacer (I) contacts the drywall. **Be careful not to over tighten.**



# Installing wall bracket to solid concrete, cinder block, or brick walls

## ⚠ WARNING

- When installing the Peerless wall bracket on cinder block, verify that you have a minimum of 1-3/8" of actual concrete surface in the hole to be used for the concrete anchors. Do not drill into mortar joints! Be sure to mount in a solid part of the block, generally 1" minimum from the side of the block. Cinder block must meet ASTM C-90 specifications. It is suggested that a standard electric drill on slow setting is used to drill the hole instead of a hammer drill to avoid breaking out the back of the hole when entering a void or cavity.
- Concrete must be 2000 psi density minimum. Lighter density concrete may not hold concrete anchor.
- Make sure that the wall will safely support four times the combined load of the equipment and all attached hardware and components.

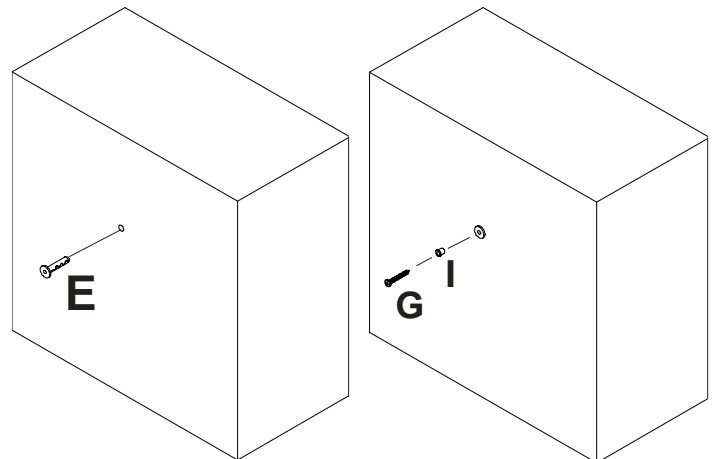
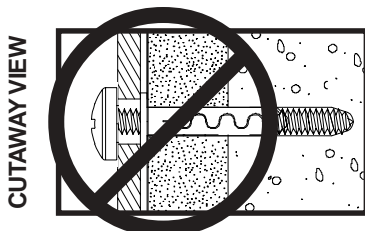
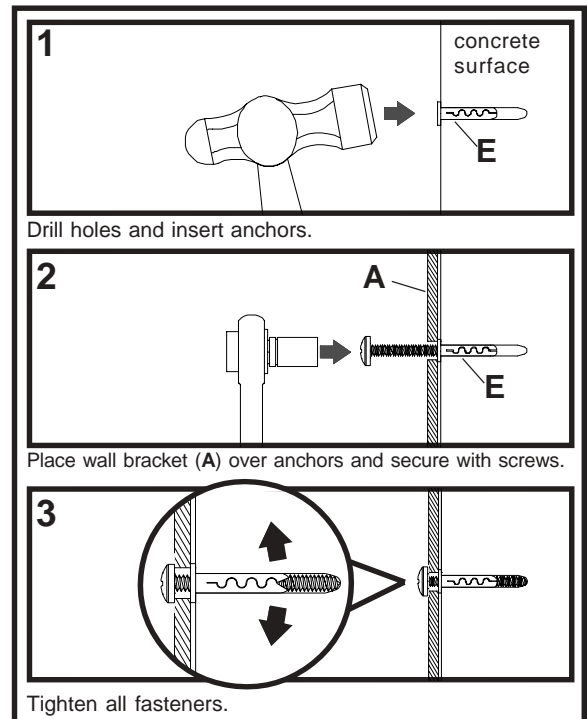
- 5** Mark the desired height for placement of LCD screen. Drill one 1/4" (6 mm) dia. hole to a minimum depth of 2" (51 mm). Insert anchor (E) in hole flush with wall as shown. Place screw isolation spacer (I) over wood screw (G). Screw #10 x 1-1/2" wood screw (G) into anchor (E). Tighten screw until the isolation spacer (I) contacts the wall. **Do not over tighten screw.**

## ⚠ WARNING

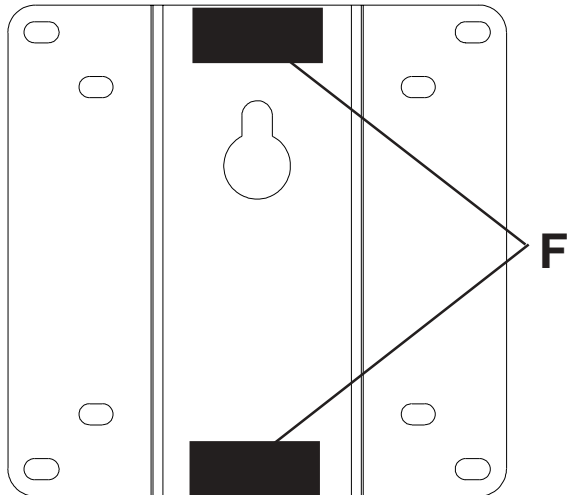
- Tighten wood screws firmly, but do not overtighten. Overtightening can damage the bolts, greatly reducing their holding power.
- Never tighten in excess of 80 in • lb (9 N.M.).

## ⚠ WARNING

- Concrete anchors are **not** intended for attachment to concrete wall covered with a layer of plaster, drywall, or other finishing material. If mounting to concrete wall covered with plaster/drywall is unavoidable, plaster/drywall (up to 5/8" thick) must be counterbored as shown below. If plaster/drywall is thicker than 5/8", custom fasteners must be supplied by installer.



- 6** Place rubber pads (**F**) on back of wall bracket in the center of the bracket, and adjacent to the top and bottom edges.



- 7** Use keyhole slot on wall bracket (**B**) to hang LCD monitor on #10 x 1-1/2" wood screw (**G**).

