

SP740P(-S)

# SmartMount® Pivot Wall Mount For 22"-40" LCD Screens

Matching elements of easy installation and user-friendliness are found in this pivot mount. It boasts a low-profile wall plate design that easily attaches to the wall with only two screws. This pivot arm extends away from the wall with ease and closes back up to save space. The arm's multiple pivot points allow the flat panel screen to swivel, tilt and roll for the perfect viewing angle adjustment and screen leveling. Its fully integrated cable management system eliminates unsightly cable clutter and provides a safeguard. Designed and built in the USA, this mount maintains the same brilliant look as the entire SmartMount® 700 Series line of Articulating and Pivot Wall Arm Mounts.



Screen size: 22"-40" (56-102cm)



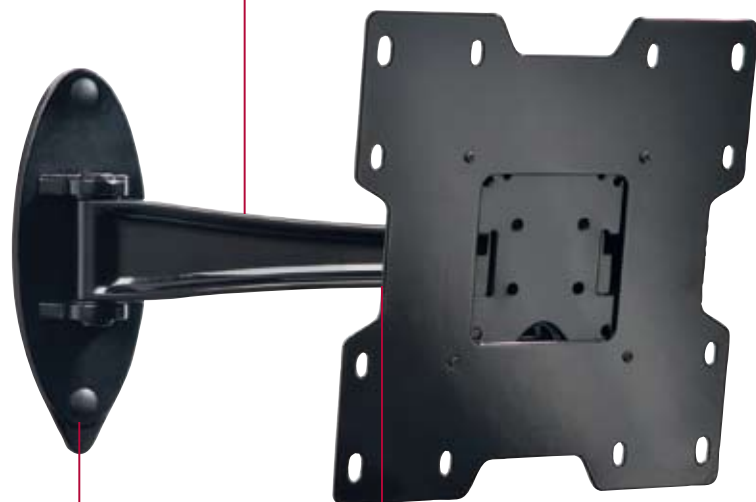
Max load: 80lb (36kg)

## FEATURES

- Compatible with 22" to 40" (56-102cm) flat panel screens with mounting hole patterns of 75, 100, 200 x 100, and 200 x 200mm
- Screen can be held as close to the wall as 2.99" (76mm) or be extended as far as 11.8" (300mm)
- One-touch tilt mechanism provide up to +15°/-5° of tilt adjustment for achieving the ideal viewing angle
- ±5° of roll allow for post installation leveling
- Screen can be swiveled a full ±45° for obtaining ideal viewing direction
- Integrated cable management system makes running cables simple while keeping the cables protected
- UL Listed for up to 80lb (36kg) load capacity

### VIEWING FLEXIBILITY

Arm extends up to 11.8" (300mm) from wall



### REMARKABLE FORM

Single stud mounting for a low-profile and fast installation

### IDEAL TILT WITH JUST A TOUCH

One-touch tilt allows adjustment of +15° /-5° without the use of tools



Post installation leveling



Cable management from the screen to the wall plate for an organized, clean look



RoHS



CLICK: [www.peerlessmounts.com](http://www.peerlessmounts.com)

CALL: 800.865.2112

FAX: 708.865.2941

peerless®

<b>SP740P(-S)</b>	Pivot Wall Mount for 22"-40" (56-102cm) LCD Screens
-------------------	---

Product Specifications

	<b>DIMENSIONS (W x H x D)</b>	<b>PRODUCT WEIGHT</b>	<b>LOAD CAPACITY</b>	<b>FINISH</b>	<b>AVAILABLE COLORS</b>
<b>SP740P(-S)</b>	8.75"-13.75" x 8.75" x 2.99"-11.8" (222-349 x 222 x 76-300mm)	5.5lb(2.5kg)	80lb (36kg)	Scratch resistant fused epoxy	SP740P: Gloss Black SP740P-S: Gloss Silver

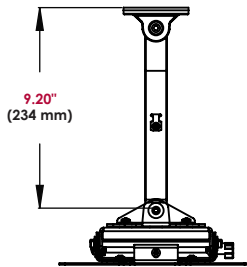
Package Specifications

	<b>PACKAGE SIZE (W x H x D)</b>	<b>PACKAGE SHIP WEIGHT</b>	<b>PACKAGE UPC CODE</b>	<b>PACKAGE CONTENTS</b>	<b>UNITS IN PACKAGE</b>
<b>SP740P(-S)</b>	13" x 10" x 4" (330 x 250 x 101mm)	8.45lb (3.8kg)	SP740P: 735029237341 SP740P-S: 735029237358	Mount, wall and screen attachment hardware, installation instructions	1

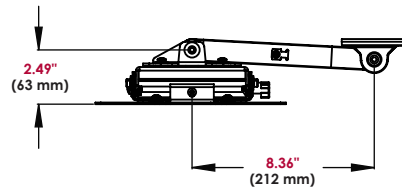
Accessories

- ACC918:** Security Faseteners
- WSP700:** Metal Stud Wall Plate for 16" Center Metal Studs
- WSP701:** Metal Stud Wall Plate for 20" and 24" Center Metal Studs

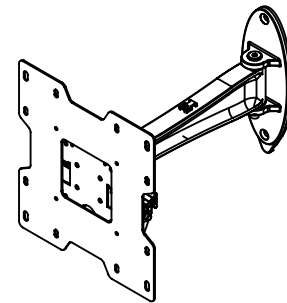
All dimensions = inch (mm)



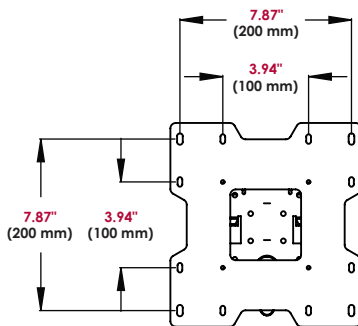
TOP EXTENDED VIEW



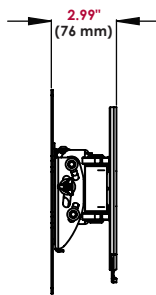
TOP RETRACTED VIEW



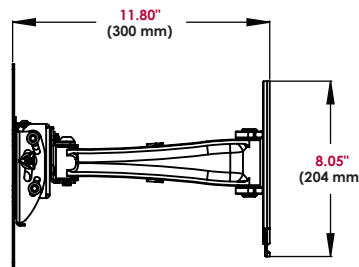
ISO VIEW



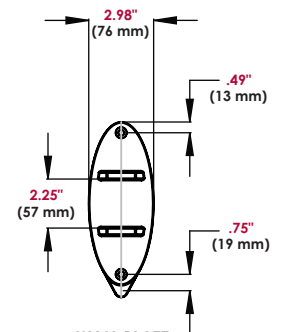
FRONT VIEW



SIDE RETRACTED VIEW



SIDE EXTENDED VIEW



WALL PLATE

**ARCHITECTS SPECIFICATIONS**

The Pivot Wall Mount shall be a Peerless model SP740 and shall be located where indicated on the plans. Assembly and installation shall be done according to instructions provided by the manufacturer. Mount is made of clear anodized aluminum and adapter bracket is made of steel with a scratch resistant epoxy silver finish.