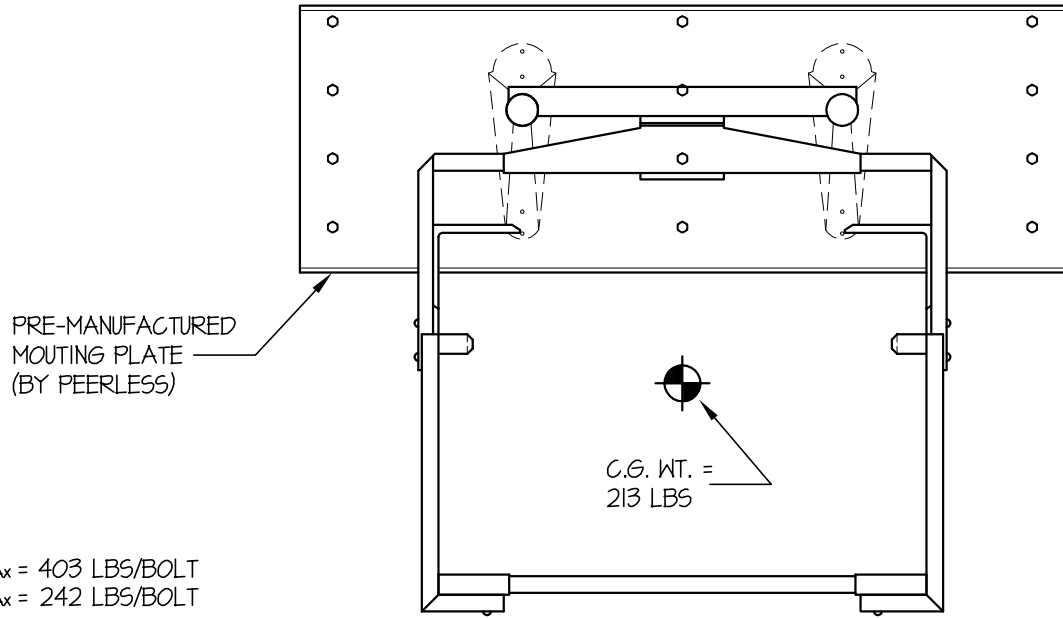


<b>EASE</b> EQUIPMENT ANCHORAGE & SEISMIC ENGINEERING		
<b>PEERLESS INDUSTRIES INC.</b>	DES. <b>R. LA BRIE</b>	SHEET <b>1</b>
	JOB NO. <b>11-0109</b>	OF <b>2</b> SHEETS
<b>DOUBLE ARM JUMBO W/ WALL PLATE</b>	DATE <b>5/4/04</b>	

SEISMIC ANCHORAGE PRE-APPROVED DETAIL

FOR MOUNTING DIRECTLY TO EXISTING STUDS



INCLUDES  
MODEL #'S

- JMW2650H
- JMW2660H
- JMW2665H
- JMW2670H
- JMW2675H

T<sub>MAX</sub> = 403 LBS/BOLT  
V<sub>MAX</sub> = 242 LBS/BOLT

FRONT ELEVATION

NOTES:

1. ANCHORAGE DESIGN PER 2001 CALIFORNIA BUILDING CODE - SECTION 1632A AND HAVE BEEN FACTORED TO REPRESENT WORKING DESIGN LOADS, NOT ULTIMATE.  
HORIZONTAL FORCE (V<sub>H</sub>) = 2.36W - (C<sub>a</sub> = .66, I<sub>p</sub> = 1.5, a<sub>p</sub> = 2.5, R<sub>p</sub> = 3.0)  
VERTICAL FORCE (V<sub>V</sub>) = 0.33(V<sub>H</sub>)
2. CENTER OF GRAVITY (C.G.) WEIGHT IS A MAXIMUM. THIS PRE-APPROVAL ENCOMPASSES ALL WEIGHTS UP TO THE MAXIMUM WEIGHT SHOWN.
3. ENGINEER OF RECORD FOR THE BUILDING SHALL PROVIDE SUPPORT STRUCTURE DESIGNED TO SUPPORT WEIGHTS AND FORCES SHOWN.



**A P P R O V E D**

**Fixed Equipment Anchorage**

Office of Statewide Health Planning and Development

**OPA- 0523 May 4, 2004**

\*\*\*\* Valid for 3 Years Maximum \*\*\*\*



*John Gillengerten*  
John Gillengerten (916) 654-3547

**EASE** EQUIPMENT ANCHORAGE & SEISMIC ENGINEERING

**PEERLESS INDUSTRIES INC.**

**DOUBLE ARM JUMBO W/ WALL PLATE**

DES. **R. LA BRIE**

JOB NO. **11-0109**

DATE **5/4/04**

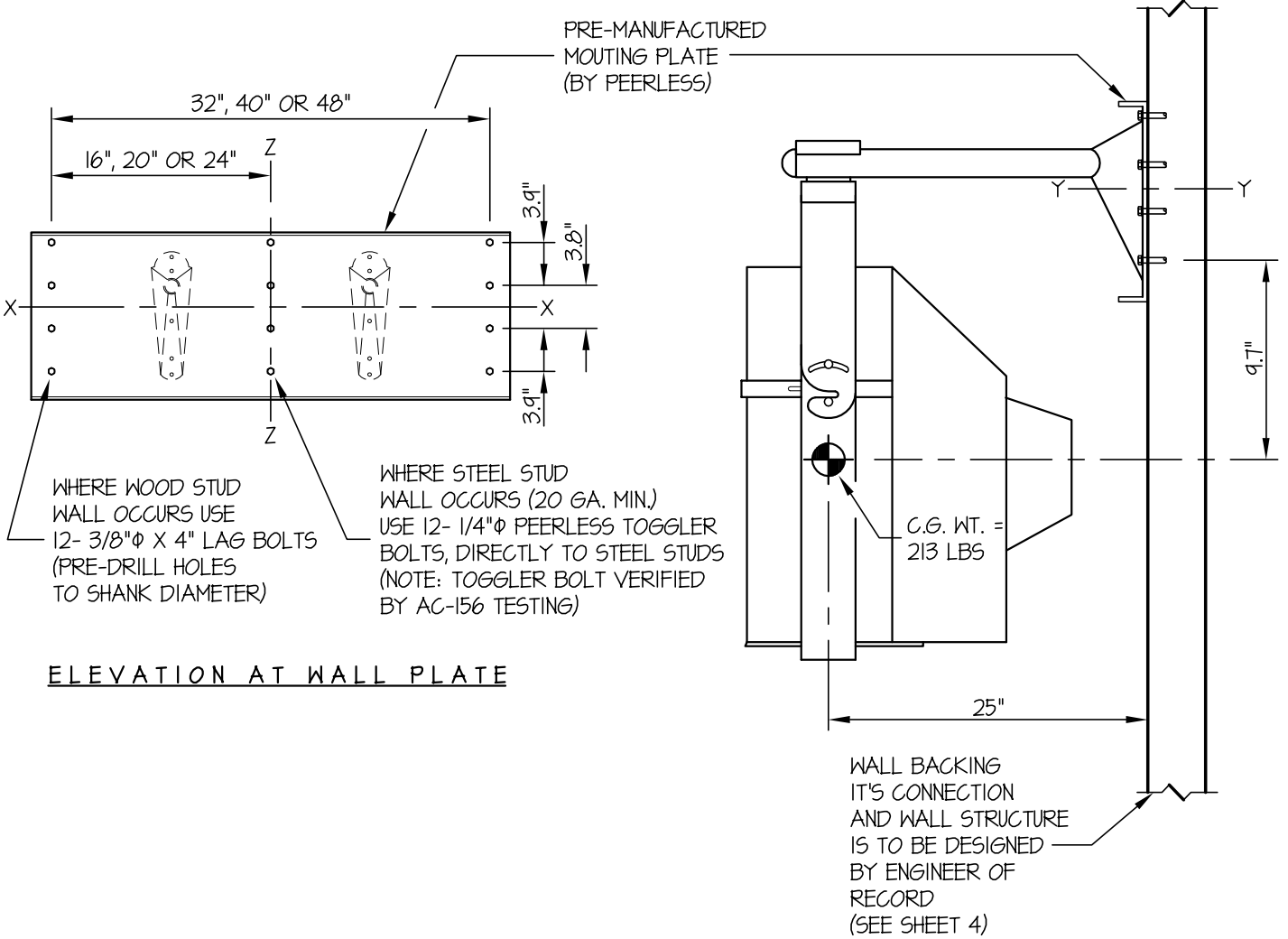
SHEET

**2**

OF **2** SHEETS

SEISMIC ANCHORAGE PRE-APPROVED DETAIL

FOR MOUNTING DIRECTLY TO EXISTING STUDS



**A P P R O V E D**  
**Fixed Equipment Anchorage**  
 Office of Statewide Health Planning and Development

**OPA- 0523 May 4, 2004**  
 \*\*\*\* Valid for 3 Years Maximum \*\*\*\*

*John Gillengerten*  
 John Gillengerten (916) 654-3547